



# KPM

HOTEL & RESIDENCES

## EXCLUSIVE OFFER FOR PARTICIPANTS OF THE 2025 FIESTRAVAGANZA INTERNATIONAL MUSIC ACADEMY

### I. ABOUT THE PROPERTY

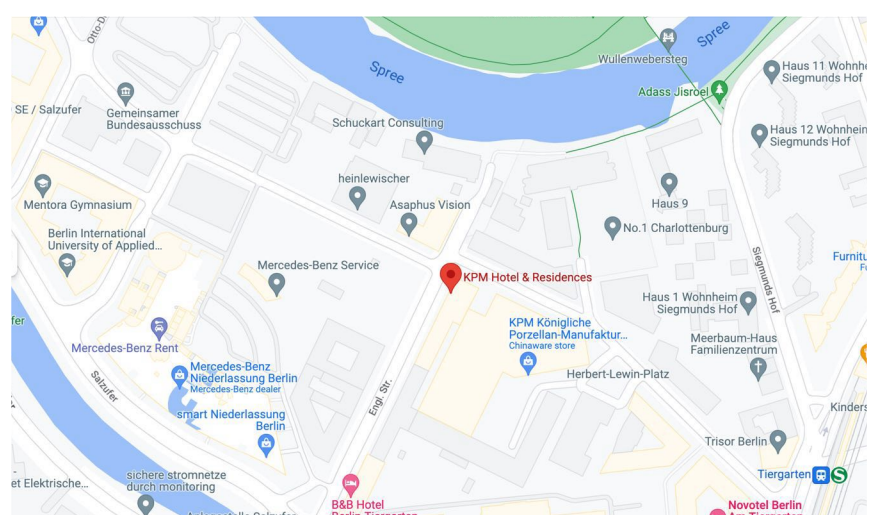
The KPM Hotel & Residences combines a maximum of comfort and coziness with a clear, individual design signature. The comprehensive, attentive service and the many amenities are geared towards the needs of our discerning capital city guests.

Opened in September 2019, The KPM Hotel & Residences also prides itself on its geographical location. Located directly at the northern entrance to the Great Tiergarten, nestled between the building ensemble of the Königliche Porzellan-Manufaktur Berlin and the Great Tiergarten, numerous Berlin hotspots are within walking distance. The S-Bahn "Tiergarten" stops a few meters from the hotel and allows you to immerse yourself quickly and stress-free in Berlin city life.

Our 126 light-flooded rooms are private retreats. Rooms that impress with their clear design, the high quality of the materials and technical details such as smart TV and tablet or the fully equipped kitchenette which is available on request. The noble aesthetics of the room furnishings with its emphasis on minimalism, combine comfort with modernity.

Address:  
*Englische Straße 6*  
10587 Berlin  
Deutschland

[GOOGLE MAPS](#)



## II. ROOM PRICES (SPECIAL RATE FOR FIMA 2025 PARTICIPANTS)

- Smart/Cozy Room at a price of **149,00 €** per room / night  
(maximum 2 persons per room)
- Deluxe/Executive Family Rooms at a price of **185,00 €** per room / night  
(maximum 3 persons per room, extra bed/sofa lounge included in the price)

Rooms may be available for sharing with other participants to save costs. You may specify your wish to share rooms directly in the FIMA application form.

The KPM breakfast buffet is offered for **25,00 €** per person per day and is not included in the above price. [MORE INFO](#)

## III. ROOM AMENITIES

Amenities (available in all room categories):

- Panorama window
- Air conditioning in all rooms
- Free high-speed WLAN
- Complimentary alcohol-free minibar
- Pod coffee machine with premium coffee capsules from Confiserie Leysieffer
- Fully equipped pantry-kitchen (at additional charge)
- Large desks
- Large wardrobe closets
- Bathrooms with walk-in showers
- Smart tablets with service tips and local information
- High-quality bedding and towels
- SPA toiletries from Molton Brown
- Iron and ironing board on request
- All rooms are non-smoking

An extra of the special kind is the fully equipped pantry kitchen for preparing small snacks or dishes. Integrated into a precisely designed wall module, it is available to our guests on request for an extra charge of **15,00 €** per night.

#### **IV. RESERVATION & CANCELLATION POLICY**

The rooms can be booked until **23rd June 2025** directly via the FIMA application form. No credit card prepayment required.

Rooms can still be cancelled free of charge up to 07 days before arrival.

If one or more rooms are not used without prior cancellation in due time, 90% of the accommodation costs of the booked nights will be charged as cancellation costs.

Please note that cancellations / reductions must always be notified in writing and are deemed accepted when the hotel has confirmed the cancellations / reductions in writing.

In the event of Force Majeure (pandemic - Covid 19) and the associated event and travel restrictions by the BUND or the state government, a cancellation of all rooms free of charge shall be offered.

#### **V. INCLUSIVE HOTEL SERVICES**

Overnight stay in the booked room category including VAT, non-alcoholic minibar, Leysieffer coffee & tea station, access to our Fitness & sauna area.

##### **PANTRY KITCHEN**

A special extra is the fully equipped kitchen for preparing small snacks or dishes. Integrated in a precisely designed wall module, it is available to our guests on request for an extra charge of 15 € per night.

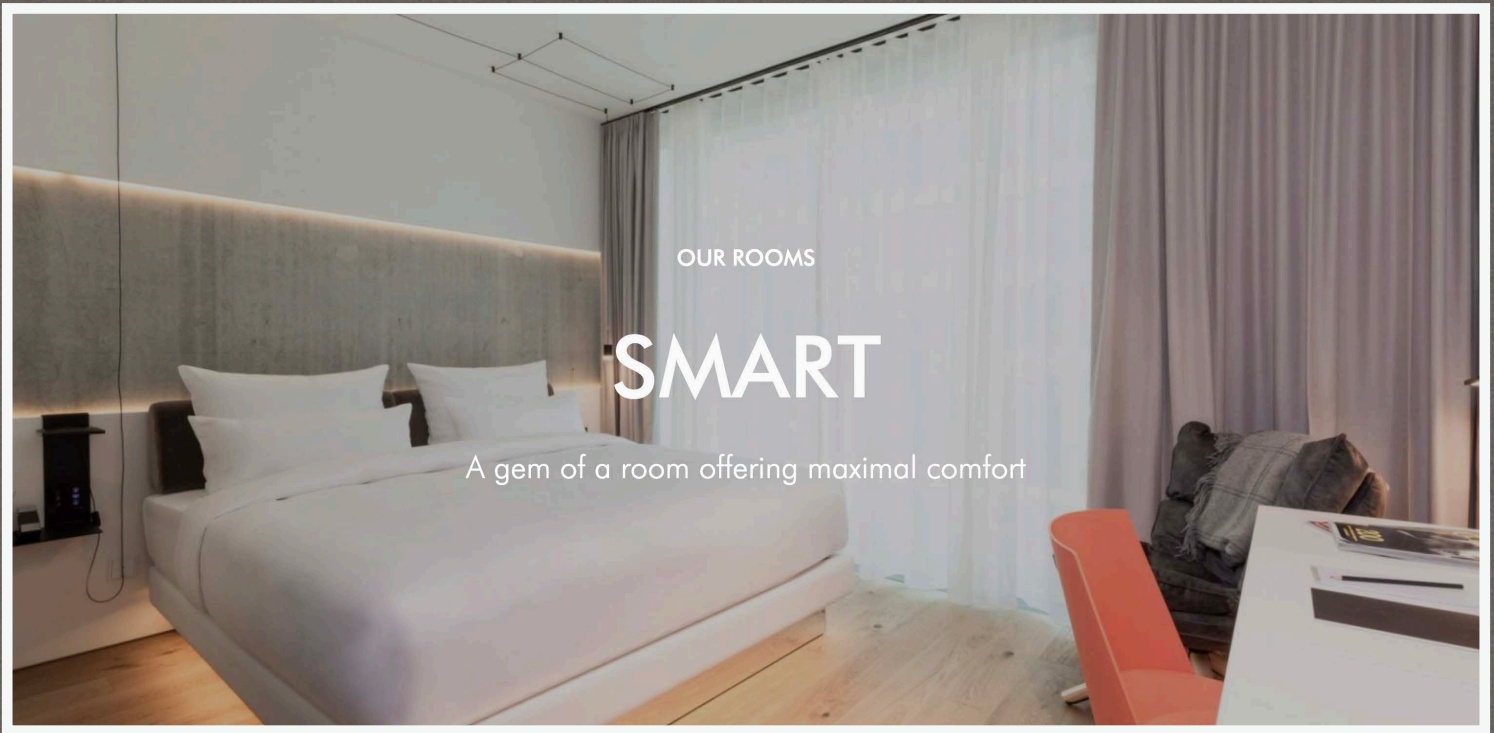
##### **PARKING**

For parking in our underground garage, we charge 22 € per night. In addition, we also provide parking spaces with e-charging station for our guests. The fee is 30 € per night. The number of parking spaces is limited. We hence request for a timely booking of parking spaces before your arrival to avoid last-minute shortage.

##### **RESTAURANT DONG A**

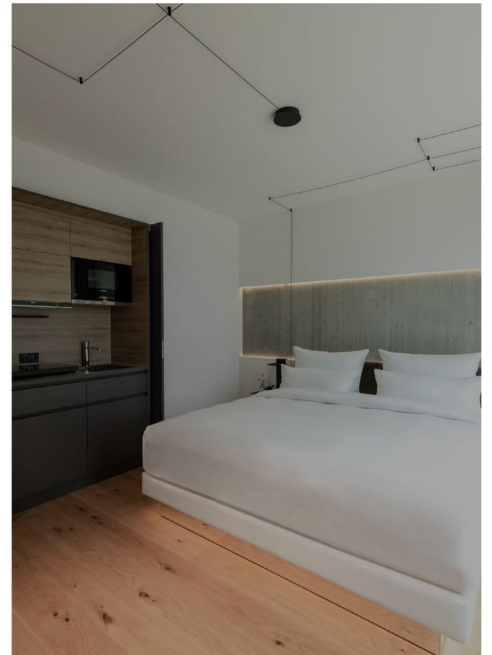
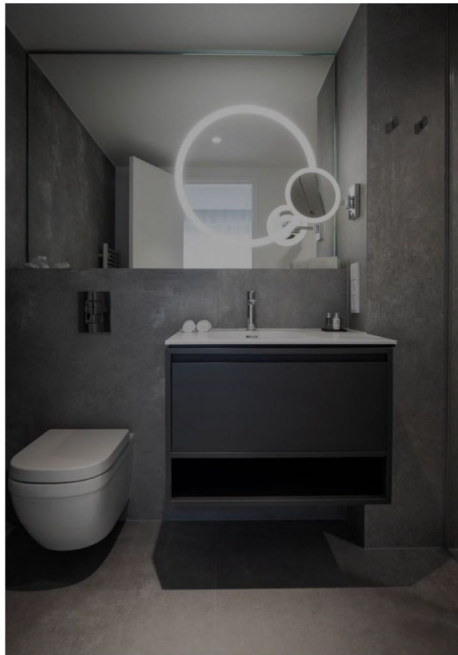
In our restaurant Dong A, the delicious variety of Asian cuisine is celebrated using fresh ingredients, exquisite spices and finely balanced herbs. The cuisine promises you a gourmet experience guaranteed to take you on a delicious journey. The seats can be reserved in advance on request.

## SMART (room size: 25 m2)

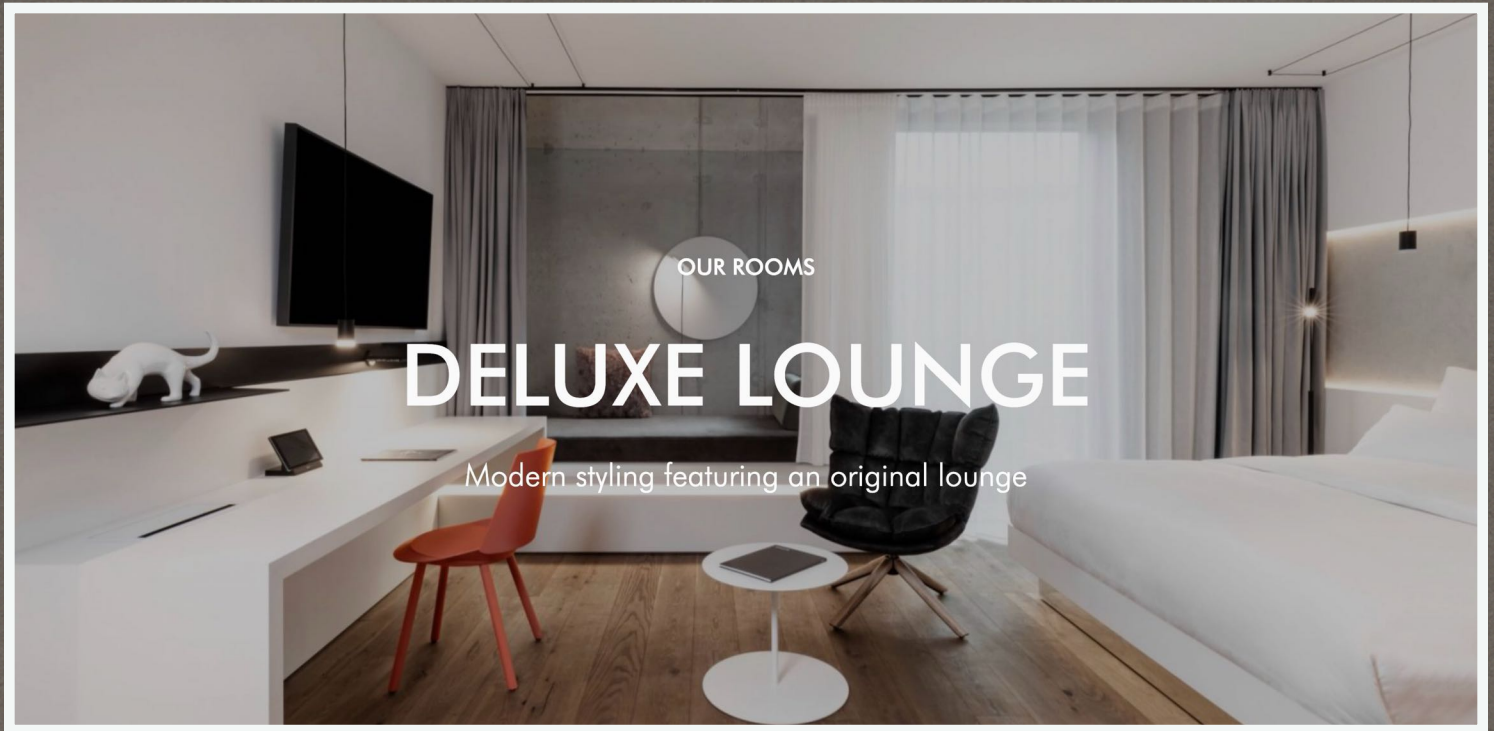


### [MORE INFO](#)

Our SMART rooms are approximately 25 square metres of marvellous space offering maximal comfort. Equipped with a California King Size bed (1.80 x 2.10 m) or a Queen Size bed (1.60 x 2.00 m), the SMART rooms are ideal for a short stay in Berlin or an overnight business trip.

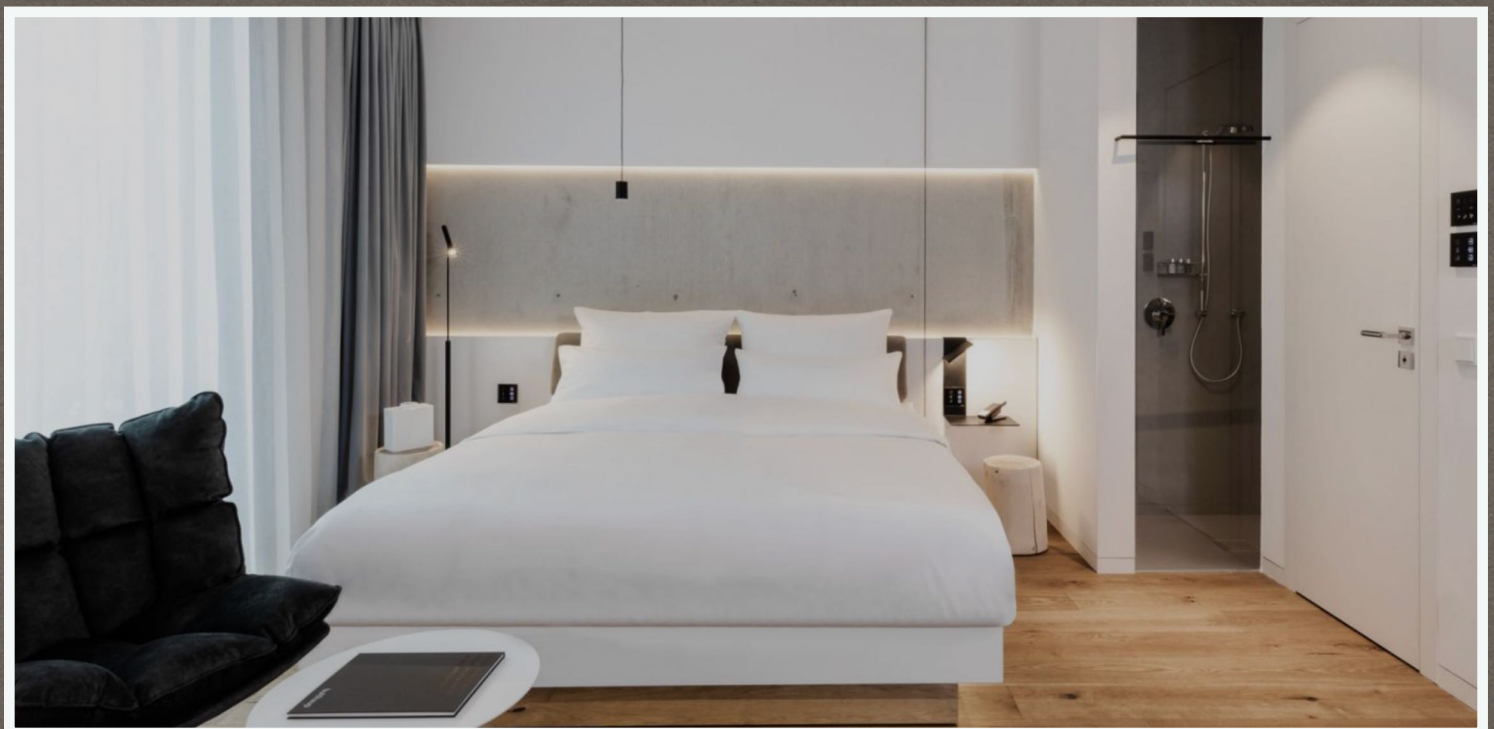


**DELUXE LOUNGE or balcony / terrace (room size: 25-35 m2)**

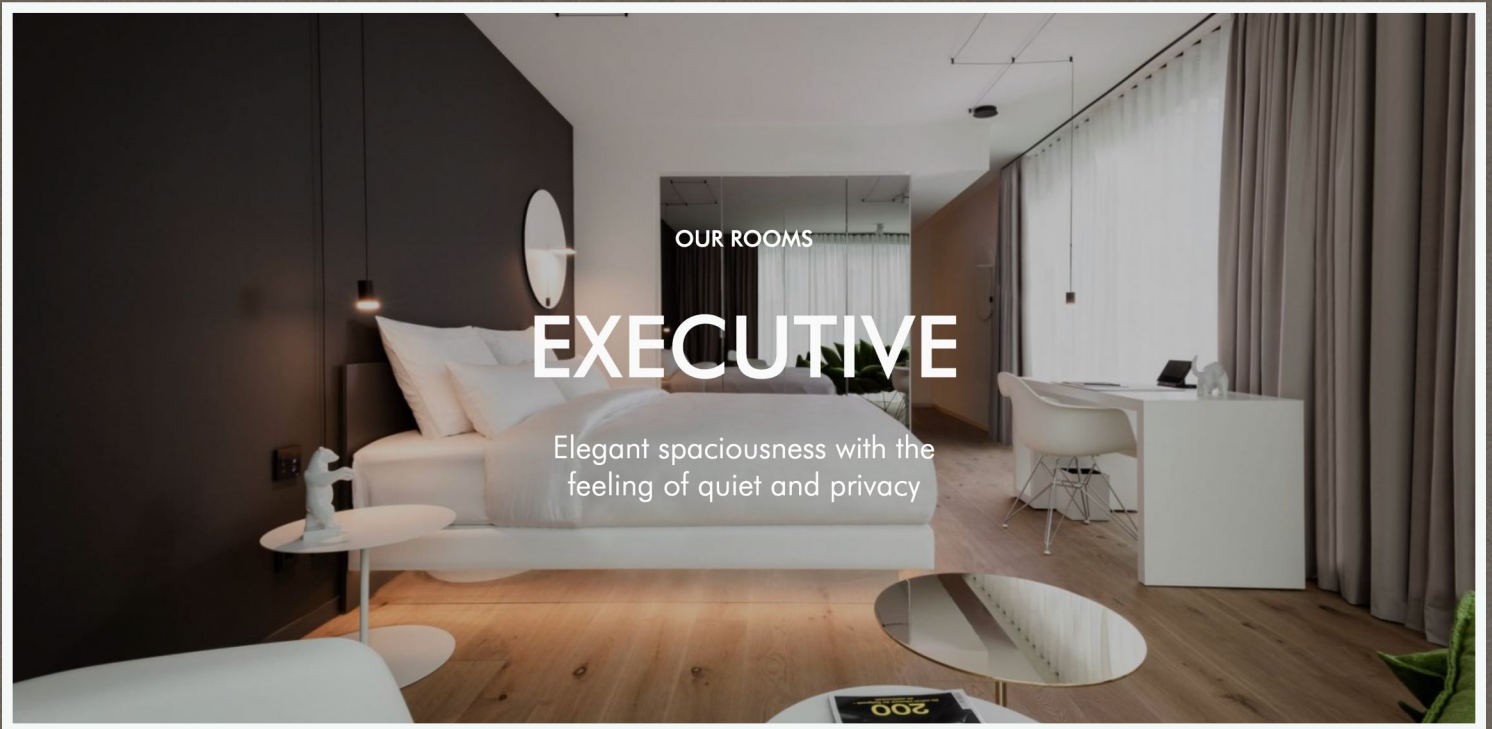


[MORE INFO](#)

The DELUXE LOUNGE rooms are equipped with a California king size bed measuring 1.80 × 2.10 m or a queen size bed measuring 1.60 x 2.00 m. The modern styling and the original lounge as an additional opportunity for retreat and relaxation make these rooms a cozy choice. The DELUXE LOUNGE sets the scene for relaxation.

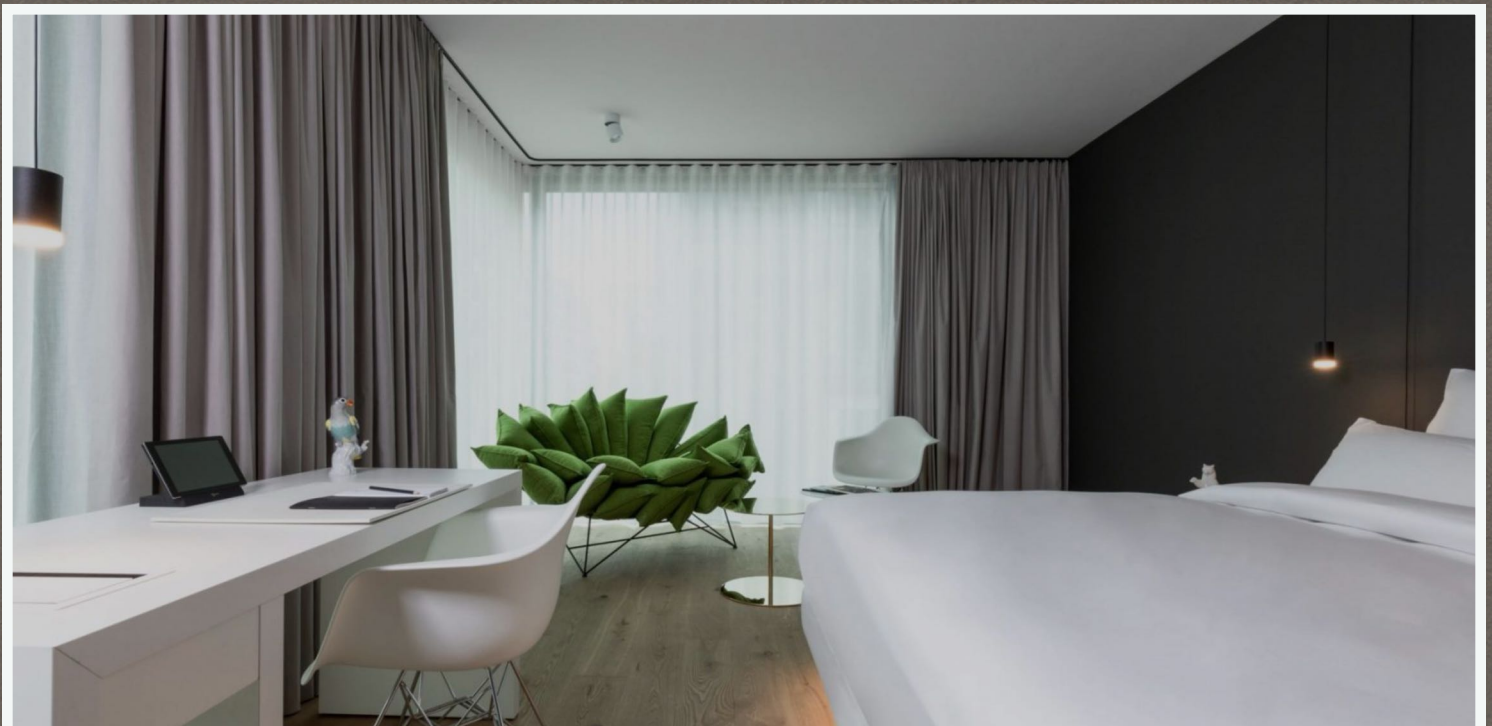


## EXECUTIVE (room size: 40 m2)



### MORE INFO

Our EXECUTIVE rooms impress with their generosity. The pleasant feeling of peace and privacy sets in with the impressive sense of space. The California king-size bed measuring 1.80 x 2.10 m blends harmoniously into the modern, comfortable interior design. Living, sleeping, working or just relaxing - everything is possible, comfortable and stress-free in our EXECUTIVE rooms thanks to well thought-out amenities, smart technology and beautiful details.

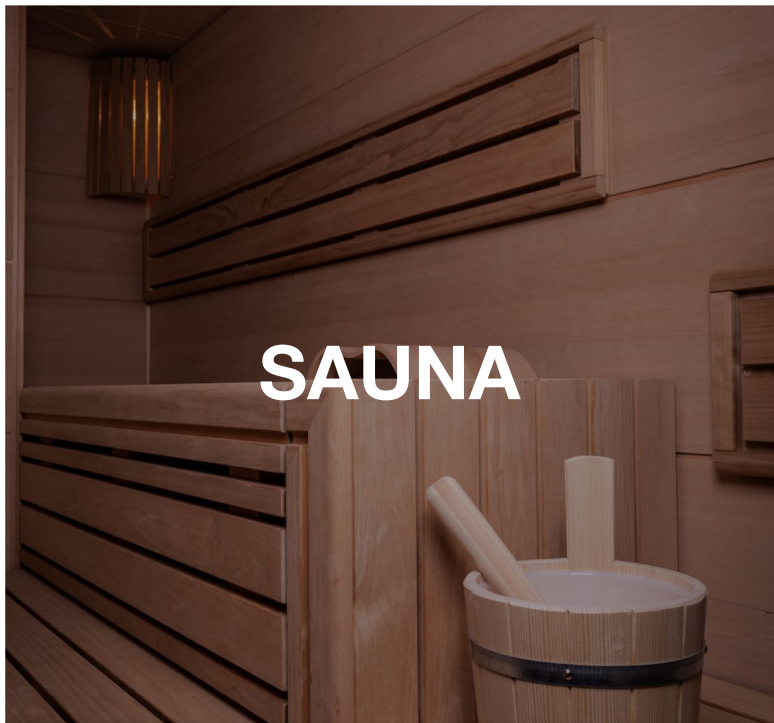




**ROOF TERRACE**



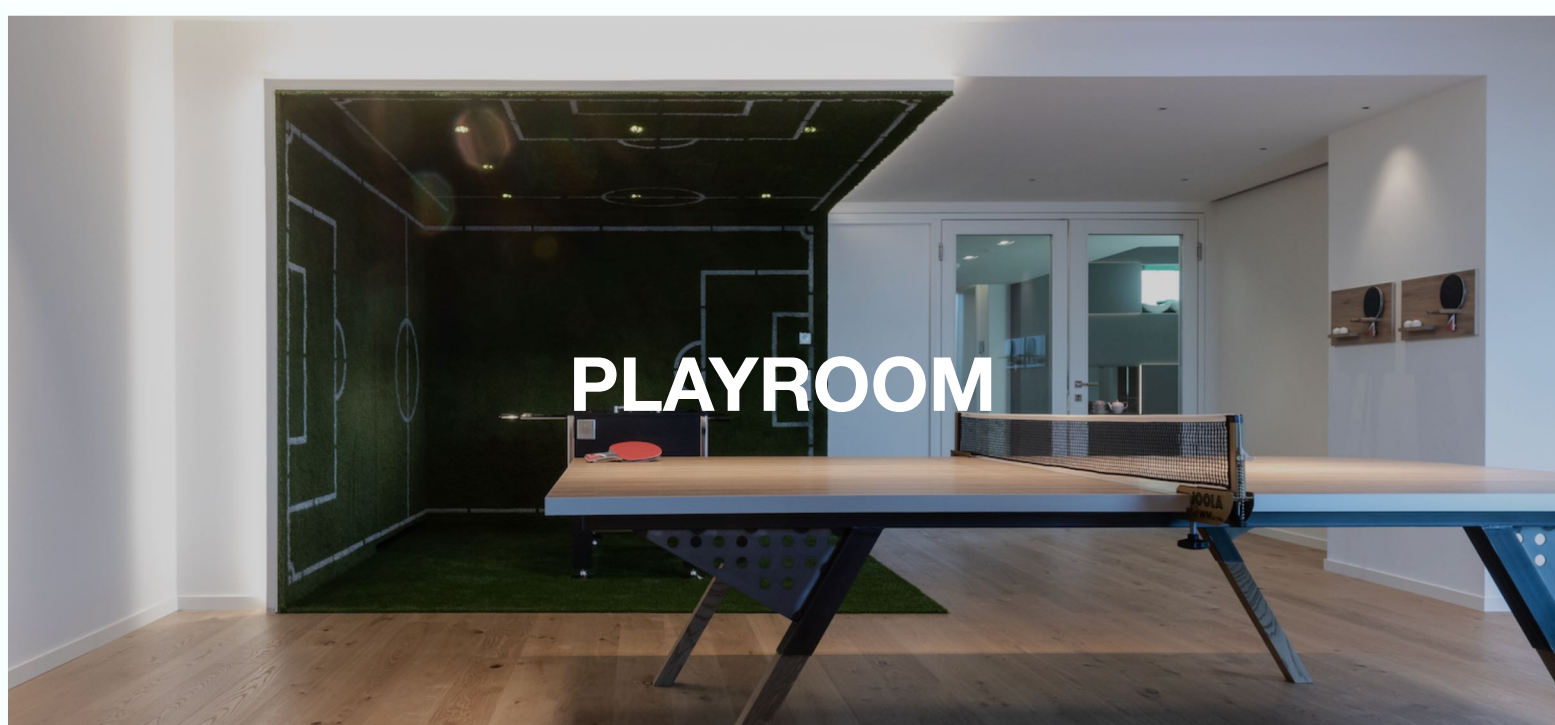
**KPM BREAKFAST**



**SAUNA**



**FITNESS**



**PLAYROOM**